

AT

sistema de batente de 45mm com corte térmico

45mm opening system with thermal break

système de battante de 45mm avec pont thermique



SISTEMAS
EURO 2000[®]
PERFIS DE ALUMÍNIO E VIDROS PARA ARQUITECTURA

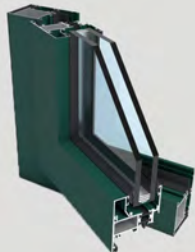
apresentação

presentation
présentation

Sistema de corte térmico projetado para combater as amplitudes térmicas existentes no território nacional. O sistema AT proporciona elevados benefícios com reduzido investimento.

Thermal break system designed to overcome thermal amplitudes on national ground. This system provides high benefits from reduced investment.

Système de pont thermique conçu pour combattre contre les variations de températures sur le territoire national. Ce système offre des hautes prestations avec un faible investissement.





características

features

caractéristiques

Apresentação: Reta | Redonda | Decorativa | Oculta
 Presentation Straight | Round | Decorative | Concealed
 Présentation Droite | Arrondie | Décorative | Caché

Aro Fixo: 45 mm | 52 mm | 59 mm | 70 mm | 77 mm
 Fixed frame | Cadre fixe

Aro Móvel: 45 mm | 52 mm
 Mobile frame | Cadre mobile

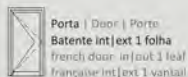
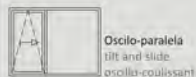
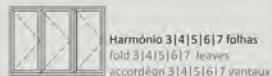
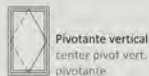
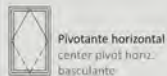
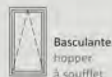
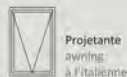
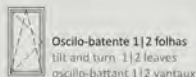
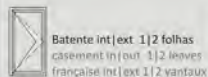
Enchimento: De 4 a 39 mm | From 4 to 39mm | De 4 à 39 mm
 Filling | Remplissage

Vedação: Junta em EPDM
 Insulation | Étanchéité EPDM joints | Joint en EPDM

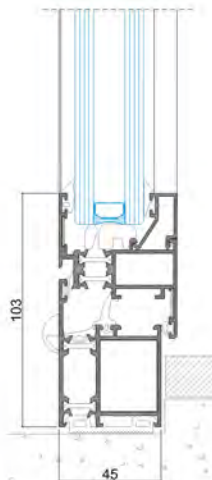
Poliamida: 15 mm
 Polyamide | Barretes

Peso máximo por folha: Maximum weight/ leaf | Poids maximale/ vantail

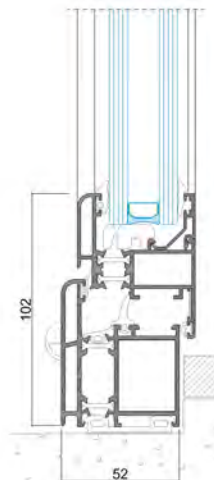
Janela batente (int./ext. 1|2 Folhas) - 150 Kg
 Casement (in/out 1|2 leaves) | Fenêtre à la Française (int/ext 1|2 vantaux)
Porta batente (int./ext. 1|2 Folhas) - 180 Kg
 French door (in/out 1|2 leaves) | Porte (int./ext. 1|2 vantaux)
Oscilo-batente | Tilt and turn | Oscillo-battant - 150 Kg
Oscilo-paralela | Tilt and slide | Oscillo-coulissant - 150 Kg
Projetante | Awning | à L'italienne - 120 Kg
Basculante | Hopper | à Soufflet - 70 Kg
Pivotante Horizontal | Center pivot hor. | Basculante - 80Kg
Pivotante Vertical | Center pivot vert. | Pivotante - 60Kg
Harmónio | Fold | Accordéon - 80 Kg



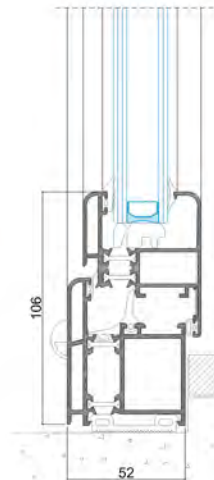
Linha Reta
Straight
Droite



Linha Redonda
Round
Arrondie



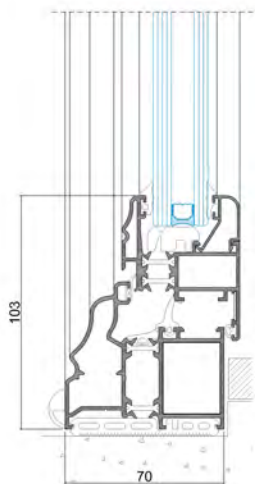
Linha Redonda sem bite
Round without glazing beads
Arrondie sans parclose



Linha Decorativa

Decorative

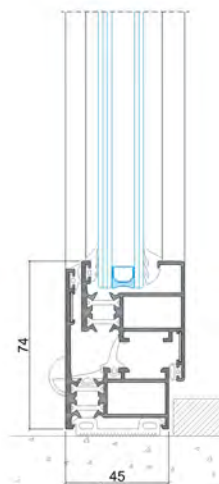
Décorative



Linha Oculta

Concealed

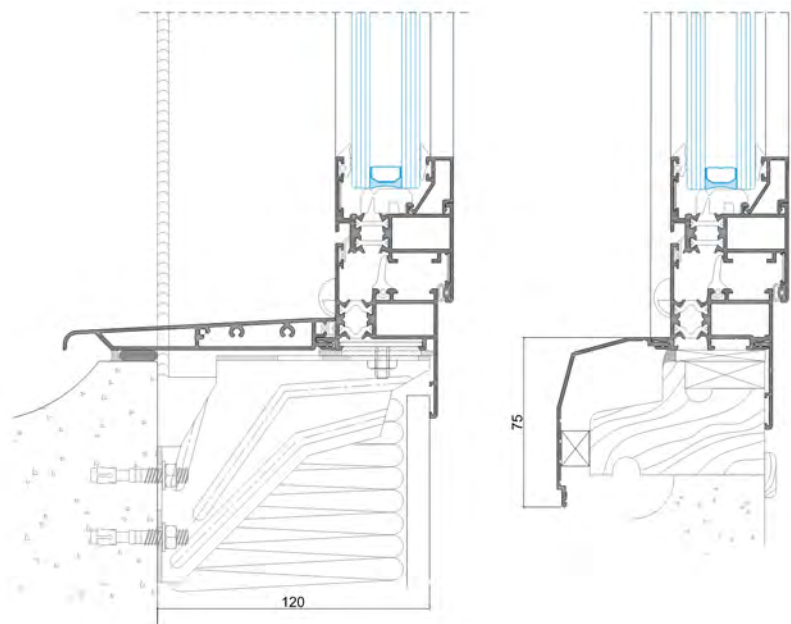
Caché



Linha *Renovatio* - Soluções para renovação

Renovatio - Solutions for renovation

Renovatio - Solutions pour rénovation



acabamentos

finishes

finitions

Lacados (disponível em catálogo de cores, Grupo Sosoares)

Lacquer (available on colour catalog, Group Sosoares)

Laqué (disponible dans le catalogue des couleur, Groupe Sosoares)

Anodizados (disponível em catálogo de cores, Grupo Sosoares)

Anodizing (available on colour catalog, Group Sosoares)

Anodisé (disponible dans le catalogue des couleur, Groupe Sosoares)

Bicoulores (diferente cor/tratamento entre interior exterior do caixilho).

Bicolour (different colour / treatment between inside and outside the frame).

Bicouleur (couleur différente / traitement entre l'intérieur et l'extérieur du cadre).



marcação CE

CE marking

marquage CE



Resultado de ensaio | Test results | Résultats des tests
NP EN 14351-1



Características | Features | Caractéristiques
Janela de 2 folhas com 1.60m x 1.40m
2 leaves window with 1.60m x 1.40m
Fenêtre 2 feuilles avec 1.60m x 1.40m

Classificação
Classification
Classification

Permeabilidade ao AR
AIR Permeability
Perméabilité à l'AIR

4

Estanquidade à ÁGUA
WATER Tightness
Étanchéité à l'EAU

E750

Resistência ao VENTO
WIND Resistance
Résistance ao VENT

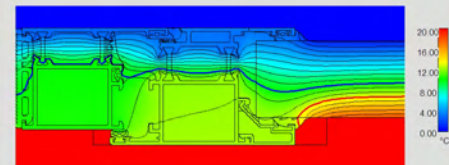
C5

Coef. Transm. TÉRMICA
THERMAL Transmittance
Coef. de Transmission THERMIQUE

Uw = 1,86 W/m² K
Ug=1,1W/m²K (Janela 2 folhas
2 leaves | 2 feuilles: 1.60x1.40m)

Isolamento ACÚSTICO
ACOUSTIC Insulation
Isolation ACOUSTIQUE

Rw janela(dB)= 36dB
Rw vidro (IGU) = 36dB, área <= 2,70m²
Rw verre(IGU)=36dB, surface <= 2,70m²





SISTEMAS
EURO 2000®
PERFIS DE ALUMÍNIO E VIDROS PARA ARQUITECTURA

SOSOARES

Rua do Campo Alegre, 474
4150-170 Porto
T +351 226 096 709 | F +351 226 005 642
E comercial@sosoares.pt

METALFER

Travessa do Bolegão, 146
Apartado 1
3754-904 Fermentelos
T +351 234 729 740 | F +351 234 729 741
E metalfer@sosoares.pt

ALFA SUL

EN Lisboa-Sintra Km 14
Apartado 156
2726-936 Mem Martins
T +351 219 265 090 | F +351 219 265 098
E alfa.sul@sosoares.pt

ALULIDER

Pavilhão Industrial H - Plataforma 13D
Zona Franca Industrial
9200-047 Caniçal - Madeira
T +351 291 960 494 | F +351 291 960 497
E alulider@sosoares.pt

PERFIS OEIRAS

Rua da Colónia - Quinta da Cardoso
Apartado 214 - Abruñheira
2711-952 Sintra
T +351 219 156 660 | F +351 219 156 661
E perfis.oeiras@sosoares.pt

www.sosoares.pt

